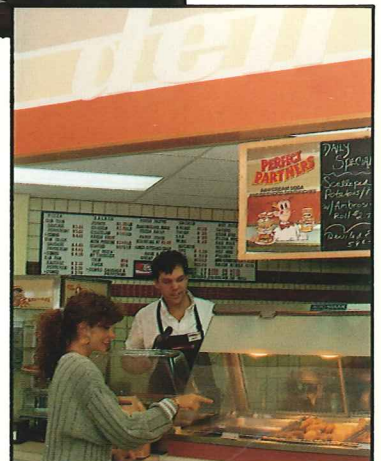
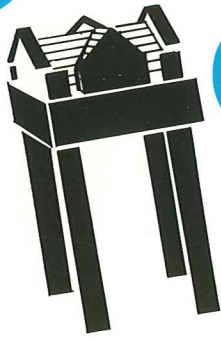
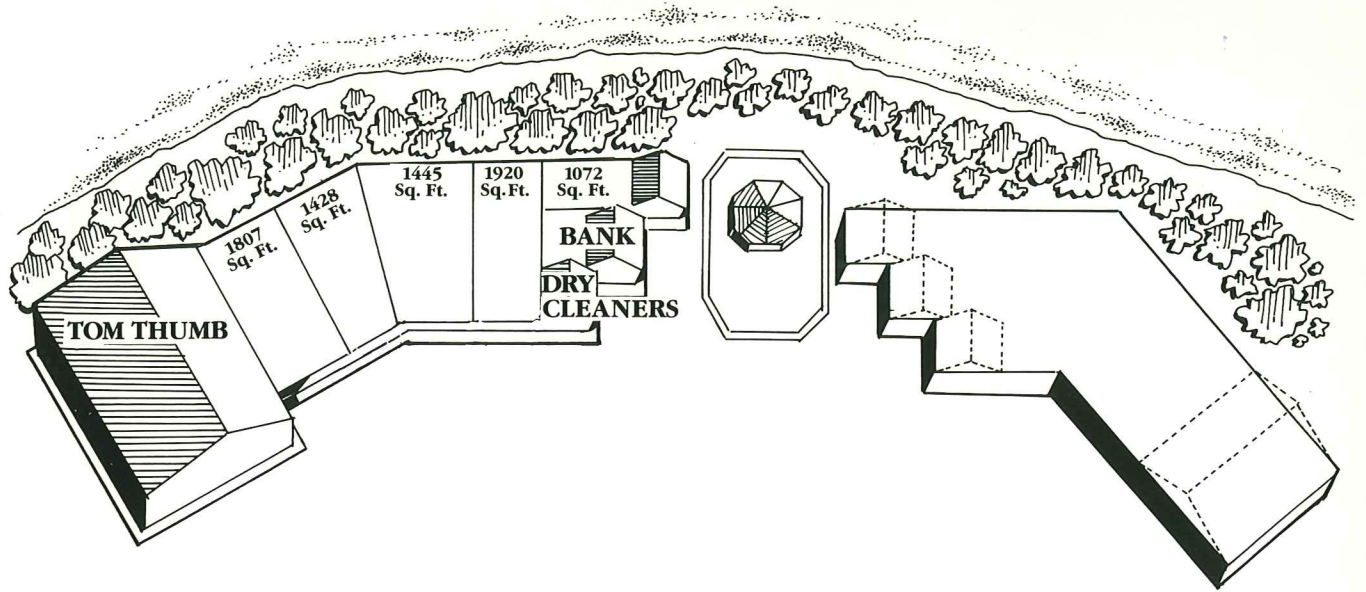


JONATHAN SQUARE





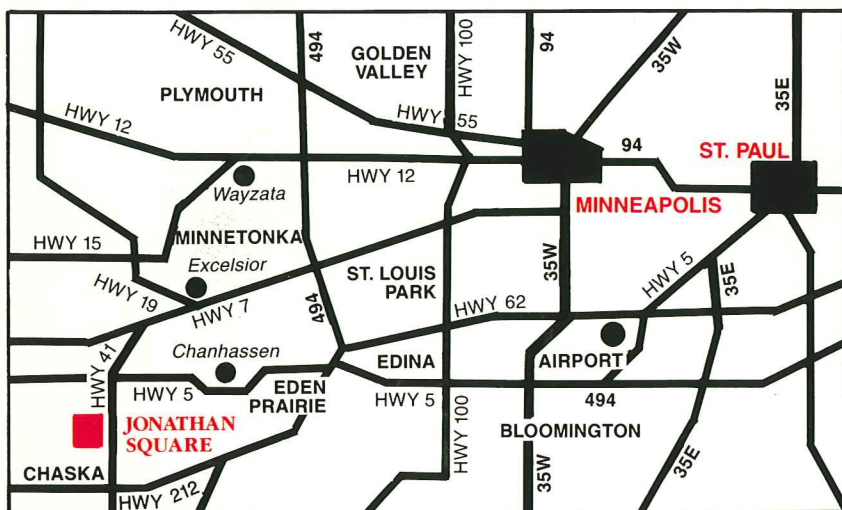
GREAT LOCATION TREMENDOUS POTENTIAL

That's Jonathan! And That's Jonathan Square Shopping Center.

Positioned to serve the needs of the exploding growth area in the north half of Chaska, Jonathan Square provides the perfect site for any new business or expansion.

Jonathan Square has space available for all types of retail or service businesses. The first phase of the 25,000 square foot complex is up with a 4,800 square foot convenience store and bank as anchors. Other units range from 1000 square feet up. Ample parking is already in place with 160 paved spaces.

If your business is one that serves the needs of young, affluent, home owning families, Jonathan Square is the location for you.



Jonathan Square Shopping Center is located 16 quick miles southwest of Minneapolis on either highway 5 or 212.

Excellent visibility and access from both Highway 41 and Jonathan Boulevard.

The Jonathan Industrial Parks, one mile North, provide employment to 4000 people.

A high traffic location in the center of the fastest growing quadrant of the Twin Cities.

